

3 levels + 4 bedrooms = the perfect family home

The house layout is perfect for vacationing families. Adults will enjoy the main level while children and teens will find lots of space to hang out on the entrance floor.



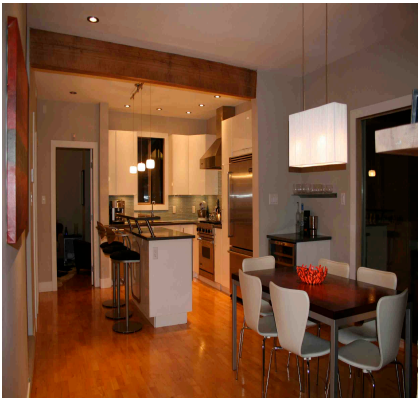
The Entrance Level

- Entrance area and closet with plenty of room for boots, coats, etc.
- Washer and dryer.
- Entrance to garage to store skis and boots.
- Large family room with TV and gas fireplace.
- Full bathroom with tub and shower.
- Bedroom with queen bed.

The Main Level

Kitchen:

- Gourmet kitchen with Viking appliances (gas range, refrigerator, dishwasher, microwave, stand mixer).
- Fully stocked kitchen. Ready to entertain.
- Caesar Stone counters and island with stools for dining.



Dining Room:

- Dining area with beautiful view of Whistler Peak.
- BBQ on deck off dining room.
- Open concept is perfect for entertaining.

Living Room:

- Double-sided, wood-burning fireplace opens onto both dining room and living room.
- Sunken living room with 20' vaulted ceilings.
- Floor to ceiling windows with view of mountains and lake.
- Large screen tv perfect for family movie night.
- Large deck off living room has a view of a small lake and a hot tub.



Also on the main floor:

- Full bathroom with shower.
- Den with pullout sofa.
- The deck off the den gets full morning sun.

The 3rd Floor

- Master bedroom with King bed.
- Large ensuite with steam shower and soaker tub.
- Huge private deck off the bedroom.
- TV and sofa for lazy days inside.

